



Hodnett Way

Kingsthorpe, Northamptonshire

oriordanbond
SALES & LETTINGS



Hodnett Way

Kingsthorpe

NN2 8GL

45% SHARED OWNERSHIP £119,250

A two bedroom semi-detached family home offered for sale on a 45% Shared Ownership basis. The property is situated on the new Buckton Fields development and is ideal for first time buyers. There are good transport links available and access to local amenities as well as Kingsthorpe high street close by.

The accommodation comprises entrance hall, sitting room, kitchen/dining room, cloakroom/WC, two first floor double bedrooms and a family bathroom. Outside is an enclosed rear garden with lawn and patio areas and two allocated parking spaces to the front. Further benefits include uPVC double glazing and gas radiator heating. (A/694/M)

Leasehold Information: Lease Remaining - 121 years (as of 2025) / Rent on Remaining Share - £353.41 pcm / Service Charge - £186.84 per annum

Additional information

- Council Tax Band: C
- Energy Efficiency Rating: B

Viewing

Viewing strictly by appointment – details below

Disclaimer

O'Riordan Bond Estate Agents Limited has not tested apparatus, equipment, fittings or services and so cannot verify they are in working order. The buyer is advised to obtain verification from their solicitor or surveyor.

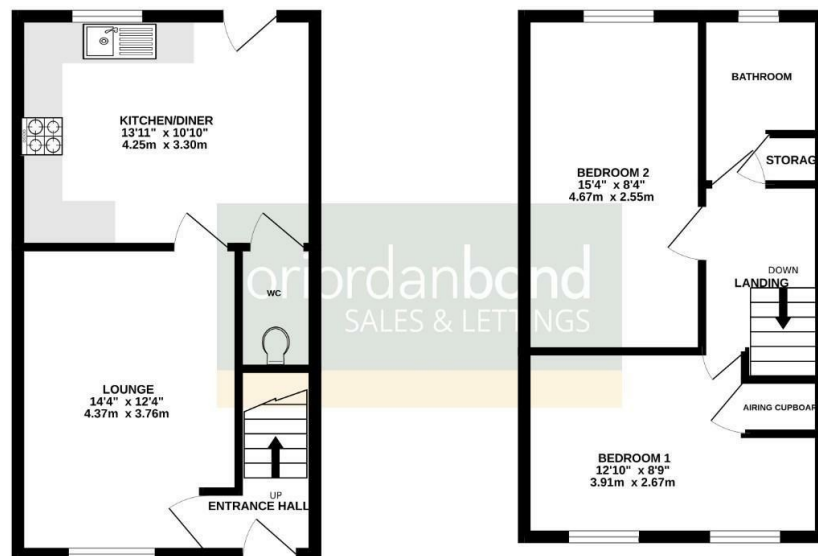
O'Riordan Bond Kingsthorpe Sales

01604 722007

kingsthorpe@oriordanbond.co.uk

GROUND FLOOR
352 sq.ft. (32.7 sq.m.) approx.

1ST FLOOR
341 sq.ft. (31.7 sq.m.) approx.



TOTAL FLOOR AREA : 694 sq.ft. (64.4 sq.m.) approx.

Whilst every attempt has been made to ensure the accuracy of the floorplan contained here, measurements of doors, windows, rooms and any other items are approximate and no responsibility is taken for any error, omission or mis-statement. This plan is for illustrative purposes only and should be used as such by any prospective purchaser. The services, systems and appliances shown have not been tested and no guarantee as to their operability or efficiency can be given.
Made with Metagix 02/25

